

**CT DEEP** **2018**  
**FISHING REPORT NUMBER 8**  
**6/14/2018**



Bowfin (*Amia calva*)



**YOU CAN FIND US DIRECTLY ON FACEBOOK.** This page features a variety of information on fishing, hunting, and wildlife watching in Connecticut. The address is [www.facebook.com/CTFishandWildlife](http://www.facebook.com/CTFishandWildlife).

**SHARE THE EXPERIENCE**  
Take someone fishing

## INLAND REPORT

*Providers of some of the information below included Candlewood Bait & Tackle, Captain Morgan's Bait & Tackle, Bob's Place (Dayville) and CTFisherman.com.*

**LARGEMOUTH BASS** fishing has been fair to good, with fish getting over the spawn in more southerly areas while in parts of northern CT, look for fish still in the spawn. Reports are from Aspinook Pond (slow), Bashan Lake, Candlewood Lake (fish definitely coming off the spawn, try topwaters early and late in the day and on overcast days, look for bass just inside and outside weedlines), Mudge Pond, Quaddick Lake, Lake Zoar, Lake Lillinonah, East Twin Lake, Killingly Pond, Lake Hayward, Hopeville Pond, Wyassup Lake, Lower Bolton Lake and Pachaug Pond.

**Tournament angler** reports are from Amos Lake (fair, 4.47 lb lunger), Bashan Lake (fair to good, 2.4 lb lunger), Gorton Pond (fair to good, 3.6 lb lunger), Mashapaug Lake (fair, 2.49 lb lunger), Pachaug Pond (fair to good, 3.38 lb and 3.0 lb lunkers), Pattagansett Lake (fair to good, average fish weight of 1.7 lbs with a 3.44 lb lunger), Quaddick Lake (good, fish averaged 2.19 lbs apiece with a 4.44 lb lunger), Wyassup Lake (good fishing, a 2.23 lb lunger but lots of one-lb fish), Connecticut River (good in the Haddam area, 4.45 lb lunger, some fish in the 3-4 lb range), Candlewood Lake (fair to good, 5.5 lb, 4.25 lb, 4.28 lb, 4.22 lb and 4.16 lb lunkers), Highland Lake (good for most of one club, fair for two other clubs, 4.61 lb, 3.2 lb and 2.75 lb lunkers), Lake Lillinonah (fair, 6.0 lb and 3.89 lb lunkers) and Lake Zoar (fair, 3.4 lb lunger).

**SMALLMOUTH BASS.** Smallmouth are providing some action, with fair to good reports from Candlewood Lake, Colebrook River Lake, Lake Housatonic (some fish found shallow over deeper water), Lake Lillinonah, and Lake Zoar. **Tournament angler** reports are from Candlewood Lake (fair to good, 4.07 lb lunger, lots of 3 lb smallies for one club), Colebrook River Lake (good for most, fair for the rest, 4.19 lb lunger), Highland Lake (some in the bags), Mashapaug Lake (hardly any brought in), Lake Lillinonah (fair to good, 3.06 lb lunger), and Lake Zoar (good action for those targeting smallies).

**TROUT- RIVERS & STREAMS** – Conditions for trout are fair to good. Water levels have dropped quite a bit (now below normal for this time of year – see stream flow graphic on page 5). Fish will now be hanging in areas

### FREE FISHING LICENSE DAYS

CAST IT FORWARD and take someone fishing on one of our two free fishing license days.

**These will be one this Sunday, June 17, 2018 (Father's Day) and Saturday August 11, 2018 (NCLI and CARE Saltwater fishing event at Fort Trumbull State Park).**

**Anyone can obtain a free one-day fishing license to fish each of these days.**

The free 1-day license for June 17, 2018 is available anywhere licenses are sold as well as our [sportsmen licensing system](#). Free Licenses for the August 11 date will be available starting on July

that provide good cover like deeper pools, woody debris, and undercut banks. Temperatures remain favorable in most waters although air temperatures are about to soar for several days. Good reports from the Hammonasset River (has been fishing very well, might be slowing just a bit), Farmington River TMA, Housatonic River, and in far northeast CT, Fivemile River (Putnam-Killingly), Little River (Putnam) and Snake Meadow Brook.

**Farmington River** –The weekend looks good for the Farmington with comfortable flows (currently 312 CFS at Riverton plus 36 CFS from the Still River). Water temperatures are now in the mid to upper 50's farther downstream of the Still River, and cooler in the Riverton area.

**Hatches/patterns.** As the flows have dropped look for a boom in insect activity. Typical go-to flies this time of year include the Tan and Black Caddis, Vitreus, and Blue Wing Olive. Others various activity includes Sulfurs, (Invaria #14-16 hatches mid-day and Dorothea #16-18), Light Cahill (#12-18), March Brown nymphs (#10-14, during the day), Gray Fox (#10-14, afternoon), Blue Wing Olives (#18-24, mid-late afternoon, Midges (#20-32) and Pale Evening Duns (Epeorus vitreus #14-16, afternoon & early evenings).

**Housatonic River** – Flows are very low and very fishable for this time of year (currently 351 CFS at Falls Village and 579 CFS at Gaylordsville). Morning water temperatures are currently in the upper 50's °F.

**Hatches/patterns.** Alder Flies (Actually a Caddisfly) are the go to fly with good activity all along the river, Black Caddis (#10-12) March Brown (#10-12), Sulphurs (#14-18, evening), Blue Wing Olive (#16-18, cloudy days, early morning; spinner fall in evening), Cahill (#14, evenings), Adams (#12-16, evening), March Brown (#10-12, afternoon) and Gray Foxes (#14-16). Green caddis (#14-18, early morning & evening) are on the water. Streamers (such as White/Yellow Zonkers or Woolly Buggers) are good options for fishing the current flows.

**Anglers are reminded that the thermal refuge areas on the Housatonic, Naugatuck and Shetucket Rivers are now closed to fishing (as of June 15). These areas will reopen on September 15. There is no fishing within 100 feet of signs indicating such closure at or near the mouths of tributaries to these rivers.**

**TROUT-LAKES & PONDS** – Trout fishing has been good in a number of areas throughout the state. Places to try include Highland Lake, Lake McDonough (15 fish mostly browns for one boat, including some 15-16 inch fish), Mohawk Pond, Candlewood Lake (trout are providing some action on alewives), Squantz Pond (some nice Rainbows have been reported), Black Pond (Woodstock), Long Pond (Stonington), and Crystal Lake (Ellington).

**CATFISH (CHANNEL AND WHITE)** are still doing very well and picking up. Quality fish are available and being caught using chunk bait, live minnows, and night crawlers. Good reports from Quinnebaug Lake (Wauregan Reservoir) and the CT River.

**CHAIN PICKEREL.** Still very aggressive. Flashy lures and Rapalas (3-5 inches) along the weed lines will attract them in many lakes and ponds throughout the state, also try shiners and in-line spinners.

**COMMON CARP.** Steady action in all locations. Lake Zoar, Batterson Park Pond, Aspinook Pond and West Thompson Reservoir are producing consistent fish in the mid 20 inch range.

**WALLEYE.** Good reports from Squantz Pond just after dark for walleyes, also some fish were being caught at Lake Saltonstall. we recommend fishing along the ledges and drop offs with 3-5" plastics or drifting some live minnows.

**NORTHERN PIKE.** Good to very good fishing in Lake Lillinonah and Mansfield Hollow Reservoir. Some catches also reported from Pachaug Pond and Hopeville Pond.

**BLACK CRAPPIE** are slowing a bit. Look for fish moving to deeper structure.

**PANFISH.** Some "dinner plate" White Perch are being found in Candlewood Lake (also Yellow Perch at 20 feet).

**CONNECTICUT RIVER** Flows remain **way** below early June levels (4,480 CFS) and water temperatures are moderate for this time of year. **AMERICAN SHAD** are around and with the temperatures remaining favorable should be around for a bit longer, look up river for action. Willow leafs have been working. **STRIPED BASS** (schoolie-size and a few bigger fish) are still being found throughout the river, especially Essex to Old Saybrook. **LARGEMOUTH BASS** are providing good action in the coves from just below Hartford to Haddam. **CHANNEL CATFISH/WHITE CATFISH** are providing solid action throughout the Connecticut River from below Hartford to Haddam. **COMMON CARP** are still providing some good action from Middletown downstream to Salmon River Cove. Catches include several 30 lb fish. **BOWFIN** (not snakeheads) catches are steady in the backwaters and side coves – watch out for the teeth!

**INLAND REPORT (Reported by You).**

Thank you to the following for adding to our Fishing Report this Week. **INLAND REPORT: Wayne G. Barber, Rene Bosilard, Patrick Sullivan, Ed Torres, Steven Rozanski, Mike Dynia, Ralph Ruiz, Jeff, Billy Hunt, Rustee Louvepost, Bill Spiegel, Ben Joseph.**

**MARINE REPORT: Tom Danilowicz, Wayne G. Barber, Steve, Pete Pozucek, Theodore G Frase III, Nate King, Brian Parkinson, J Pauloski Jr., Chris Dickinson.**

**Notable Catches Reported:** 14" Rainbow, Largemouth Bass in pounds 6.9, 5.4, 3, 2, 3.2, Smallmouth Bass in pounds 4.7, 4, 1.5. Couple of nice browns.

**How Did They Rate the Fishing?**

<i>Species</i>	<i>Excellent</i>	<i>Good</i>	<i>Average</i>	<i>Fair</i>	<i>Poor</i>
Trout	1	4	1	1	0
Bass	3	3	6	5	1
Pike	1	0	0	0	0
Walleye	0	0	0	0	0
Channel Catfish	0	0	0	0	0
Panfish	2	0	3	0	0
Common Carp	0	0	0	0	0

**What was HOT!** Rapala rattle trap in Blue/Chrome; Alder Fly; Michigan stinger green, night crawlers, senko, Rapala floating shiner, 9" top water shallow diving minnow. 8" gliding swim bait. Wacky rig, rooster tail and gulp worms, minnows, pink rubber worm.

**What was NOT!** Stick Bait, Gold Pheobe, Crankbait, Fast moving baits, Zug Bug or Bead head nymphs.

**Good or better places to fish included:** West Thompson Reservoir, Housatonic River TMA, North Farms Reservoir, Highland Lake, Scantic River, Quaddick Reservoir, Middle Pond, Lake Housatonic, Bantam Lake, Lake Lillinonah, Mamasasco Lake, Lower Moodus Reservoir, Coventry Lake, Stratton Brook, Mill River not in the TMA.

**Fair or worse places to fish included:** Pachaug Pond, Candlewood Lake, Black Pond, Silver Lake, Pequonnock River, Rainbow Reservoir, CT River Yankee Power Plant Canal

**Some key hatches last week:** Alder fly (Zebra Caddis), Sulphurs, Light Cahills,

**Friendly Angler Advice (unedited):**

Not every Bass develop post partum blahs. Some mostly young males in the 8 to 13 inch length will continue to strike. You will find them hanging around places where the sunfish are nesting, terrorizing the bluegills and pumpkinseed. A floating minnow type lure will catch these bullies. The post spawn doldrums will end when the weather hits 80 for a few days. Very early morning and late evening are prime. Rainy days will increase your bag limit and during any sunny blue sky days try to fish the shady side of a cove. Green Pumpkin 5 inch Senkos, Rattle Traps and plum lizards set up Carolina Rig style should do the trick.

Water temps increasing in Housatonic TMA. Thermal refuge regs go into effect Friday, June 15. Time to start the transition to smallmouth. If you catch trout, play them quickly and get them back in the water.

Scantic still fishing good for trout

Most Largemouth are now in their pre-spawn phase throughout the state. Largemouth in our current weather conditions will generally cling to some form of structure or cover in water that's deep enough to provide security and sun light protection while also allowing quick access to shallow flats or island tops for low light feeding (sunrise & sunset). Most of the heavier Largemouth were in 5 to 10 foot depths with submerged weed cover while a few others were suspended over deeper water. All Smallmouth were found on bottom in 9 to 12ft. depths using pot-belly crankbaits and slow sinking jigs. Lot's of action with smaller Northern Pike inhabiting & cruising the same depths and areas as the Largemouth.

Watch for the first bugs dropping off the overhang blueberry bush's on your favorite pond or lake.

The 3 fish I caught were extremely healthy and they were released in the same condition. I hope to catch them again this weekend '

**TROPHY FISH AWARD PROGRAM:**

DEEP's [Trophy Fish Award Program](#) recognizes angler skill by awarding a bronze pin for your first trophy fish, a silver pin for your fifth trophy fish, and a gold pin for your tenth trophy fish. Angler of the year is awarded at our annual Trophy Fish Award Ceremony.

To see if your fish qualifies check out the criteria on page 13 of the [Angler's Guide](#). If you have caught a trophy fish be sure to fill out the affidavit (page 12 of the Angler's Guide) and submit the required photo(s) and form to us. Good luck!

**FISH OF THE WEEK:**





**NOTES & NOTICES:**

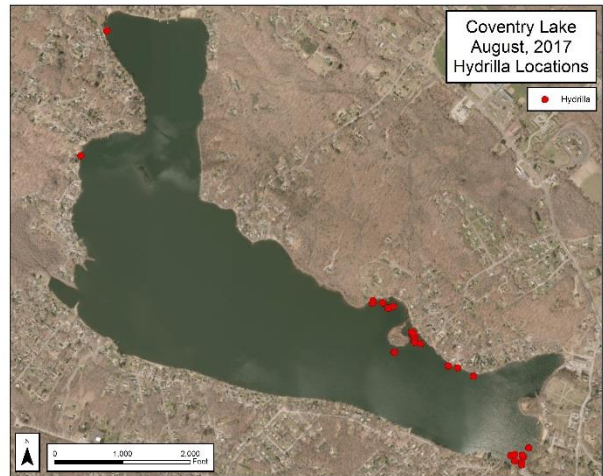
**STORM DAMAGE UPDATE.** Due to storm damage, the following Connecticut State Parks remain closed:

- **Sleeping Giant**, Hamden. This closure includes the Sleeping Giant TMA on the Mill River (Hamden).
- **Wharton Brook**, Wallingford. This closure includes the Wharton Brook Trout Park.

**CENTER SPRING POND (Manchester - dredging).** A dredging project is beginning at Center Spring Pond. Hydrallic dredging will be used so there'll be no drawdown but access to a portion of the park may be limited.

**CONNECTICUT RIVER (invasive species alert).** In 2016 hydrilla was found in the main stem Connecticut River in Glastonbury (near Glastonbury's Riverfront Park & Boathouse). **Last year hydrilla was found at other locations along the river including Wethersfield and Crow Point coves and at a site in Enfield.** See the Coventry Lake entry below for what river users should do to prevent spread of this invasive plant to other waterbodies.

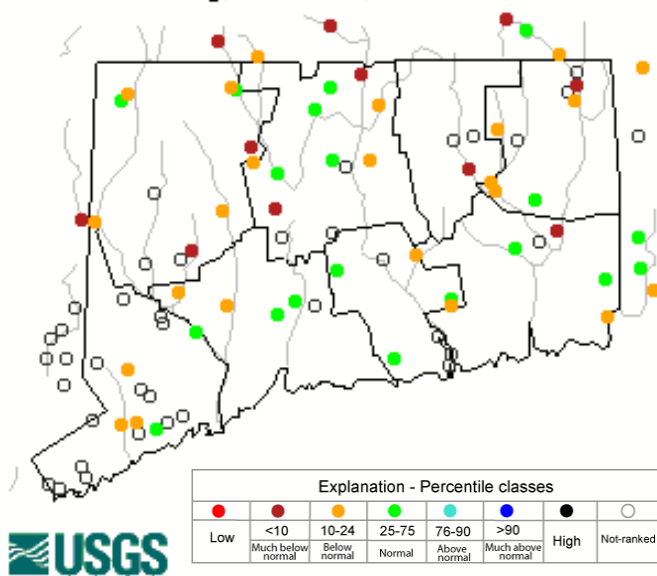
**COVENTRY LAKE (invasive species alert).** Hydrilla, a very highly invasive aquatic plant, has been found growing in Coventry Lake. All lake users should take extra care to check and clean their boats (including canoes, kayaks and rowing sculls), trailers, and fishing equipment before leaving the boat launch, or leaving the lakeshore.



*Coventry Lake (Wangumbaug Lake) boaters should avoid the areas noted with red dots to avoid fragmenting and spreading hydrilla.*

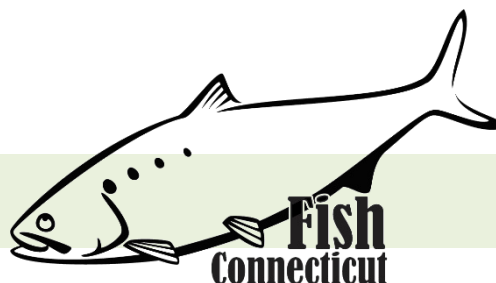
**STREAM FLOW CONDITIONS**

Thursday, June 14, 2018 19:30ET



Data in the state graphic to the left are generated by the United States Geologic Survey (USGS) and are available on line at: <http://waterdata.usgs.gov/ct/nwis/rt> A percentile is a value on a scale of one hundred that indicates the percent of data in the data set equal to or below it. For example streamflow greater than the 75<sup>th</sup> percentile means only ¼ of the streamflow values were above the value and thus would be considered “above normal”. Stream flow between the 25<sup>th</sup> and 50<sup>th</sup> are considered to be “normal flows” and those 25<sup>th</sup> or less are considered to be “below normal”.

## MARINE FISHING REPORT



Surface water temperatures in Long Island Sound (LIS) are in the 50's °F. Check out the following web sites for more detailed water temperatures and marine boating conditions:

<http://www.mysound.uconn.edu/stationstat.html>    [http://marine.rutgers.edu/mrs/sat\\_data/?nothumbs=1](http://marine.rutgers.edu/mrs/sat_data/?nothumbs=1)  
<http://www.ndbc.noaa.gov/>    <http://www.wunderground.com/MAR/AN/330.html>

**Connecticut State Boundary Line in Long Island Sound.** Anglers please note: Though Connecticut has reciprocity with neighboring states (New York, Rhode Island, Maine and Massachusetts), residents of Connecticut are required to have a CT Resident Marine Waters or All Waters Sport Fishing License to fish in the Marine District.

**SHORE FISHING SPOTS & TIDE TABLE INFORMATION** To find a saltwater shore fishing spot close to where you live, go to the following website: <http://www.lisrc.uconn.edu/coastalaccess/>.

For **ENHANCED OPPORTUNITY SHORE FISHING** sites and other fishing information including a site map go to the following website <http://www.depdata.ct.gov/maps/saltwaterfish/map.htm>.

Please see page 64 of the **2018 CT Angler's Guide** for CT tide information.

**FROM THE ANGLERS: Tom Danilowicz, Wayne G. Barber, Steve, Pete Pozucek, Theodore G Frase III, Nate King, Brian Parkinson, J Pauloski Jr., Chris Dickinson**

This past week, Yo-Zuri Hydro Minnow LC Black/Silver, Squid Jigs, Viper Spoons, Cut Clams, Dark colored bucktails with some Uncle Josh Trailers, Top water Rattler, soft baits on a slow retrieve (white or chartreuse) were working great.

**Notable catches:** 25 inch 6.5 pound fluke off Stamford, First cast fish on 29 inch Striped Bass for the Grill, Some Porgy up to 15 inches, Lots of Fluke, 2 Striped Bass over 30 pounds, Lots of schoolies and mainly keepers in the mouth of the CT River.

### How Did They Rate the Fishing?

Species	Excellent	Good	Average	Fair	Poor
Striped Bass	3	1	0	1	1
Fluke	2	1	0	0	1
Black Sea Bass	0	1	0	1	0
Porgy	0	0	1	1	0
Sea Robin	2	0	2	1	0

**STRIPED BASS** fishing is still good. Schoolie (juvenile) striped bass are still dominating Connecticut Rivers including the Thames, Connecticut River, Housatonic and Norwalk rivers as well as most rivers in between. Niantic Bay has been very active this week. These juveniles continue to head towards the river mouths and explore surrounding shore locations including Enhanced Opportunity Shore Fishing sites such as Cini Park and Mago Point. This week striped bass have been caught at Norwalk Calf Pasture Beach Pier, Sherwood Island Boulders, South Benson Pier, Saint Mary's by the Sea, Bonds Dock, Silver Sands Beach, Pleasure Beach Family Pier, Walnut Beach, West Haven's Sandy Point, Bradley Point, New Haven's new Fort Nathan Hale Pier and intermittent action from Branford to Stonington. These juveniles are getting hooked on Sluggos, Sand Worms, and Deadly Dicks, casting umbrella rigs or any 4"-6" soft plastic with a led head. Their larger brethren are loving fresh Atlantic menhaden (bunker) and American eels. You'll triple your chances of catching a CT Trophy Award Program striper by live-lining eels and bunker. Montauk, The Race, Middle ground, the Norwalk Islands and Captains Island are scoring some monster bass. Mojos, Bunker Spoons and Tsunamis in olive have also proved effective. It's always good to fish for striped bass around some structure, after all, that's why stripers are also referred to as "rockfish" in some areas.

**Please use circle hooks when fishing with bait to prevent gut hooking and practice catch & release.**

**SCUP** (porgy) continue to be caught along the shore from Greenwich to New Haven, and are also beginning to show-up in New London and Middlesex counties. Anglers are reaching their limit of 30 at many Enhanced Opportunity sites as well as shore locations in between. Scup as always are preferring clams and squid on a high-low rig. Larger Scup (up to 19") are still being caught off Montauk, Peconic Bay, just South of Fishers Island, Little Peconic Bay, South of Two-Trees Island, Six-Mile Reef, Stratford Shoals Lighthouse, Cockenoe Island and the Greater Norwalk Islands, Greens Ledge Lighthouse, off of Todd's Point and Captains Island.

**SUMMER FLOUNDER** (fluke) are most prevalent off Greenwich in 30'-40' of water and off of Montauk, Fishers Island and Block Island in 40'-60' of water but it's hit or miss. As the squid move into Long Island Sound from Block Island Sound the large summer flounder (and a variety of other species) will follow. With the water temps still warming, most catches of "keeper" fluke have been as a result of by-catch aboard your favorite party/charter boat.

**BLACK SEA BASS** have been caught this week on sand worms, clams and squid with squid working best. Six-Mile Reef is producing keepers close to the Connecticut-New York border, but make certain you are in Connecticut waters as BSB season has not begun yet in New York.

**BLUEFISH** Blue fishing has been sporadic as the larger alligators are still migrating from the south. As you know they will eat almost anything and often swim within striped bass schools. This week they have ranged from 17"-21." But they are showing-up off Millstone Power Plant and especially The Race and Plum Gut as well as the Greenwich area, specifically off 'The Weather Buoy'.

**WEAKFISH** (sea trout) are still caught mostly as by-catch aboard Charters and Party Boats. But weakfish lovers have also had success this week off of Charles Island, Sandy Point in West Haven and the Milford beaches.

*Need a fishing spot you've never been to? Want to know details about the site like coordinates? Are there nearby restaurants, is there an adequate amount of parking spaces and more? Just visit the site below, click guest and then on the next screen select the state of Connecticut;*

<https://www.st.nmfs.noaa.gov/msd/html/siteRegister.jsp>

**IMPORTANT NOTE to ANGLERS:** there are many reports of **leaping sturgeon** in the lower CT River (Essex to the Old Saybrook). A common spring behavior for these **endangered fish species (Atlantic and shortnose)** as they attempt to gulp air for their primitive swim bladder. Anglers are incidentally snagging or catching these sturgeon while bottom fishing. Please release all sturgeon without avoidable harm as their populations are slowly recovering and are at VERY low levels. They are a protected species. Thank you.

**For Current Connecticut Recreational Fishing Regulations:** Anglers should consult the 2018 Connecticut Anglers Guide which is now available at most Town Clerks Offices, DEEP offices and at tackle stores selling fishing licenses. Current regulations, electronic versions of the Angler's Guide and additional information can all be accessed on the DEEP website at: [www.ct.gov/deep/fishing](http://www.ct.gov/deep/fishing).

**PLEASE CALL 1.800.842.4357 TO REPORT FISHING VIOLATIONS.**

The Connecticut Department of Energy and Environmental Protection is an Affirmative Action/Equal Opportunity Employer that is committed to complying with the requirements of the Americans with Disabilities Act. Please contact us at (860) 418-5910 or [deep.accommodations@ct.gov](mailto:deep.accommodations@ct.gov) if you have a disability and need a communication aid or service; have limited proficiency in English and may need information in another language; or if you wish to file an ADA or Title VI discrimination complaint.

---

**DEEP WEEKLY Fishing Report**



**Connecticut Department of  
ENERGY & ENVIRONMENTAL PROTECTION**

79 Elm Street, Hartford, CT 06106  
[www.ct.gov/deep](http://www.ct.gov/deep)